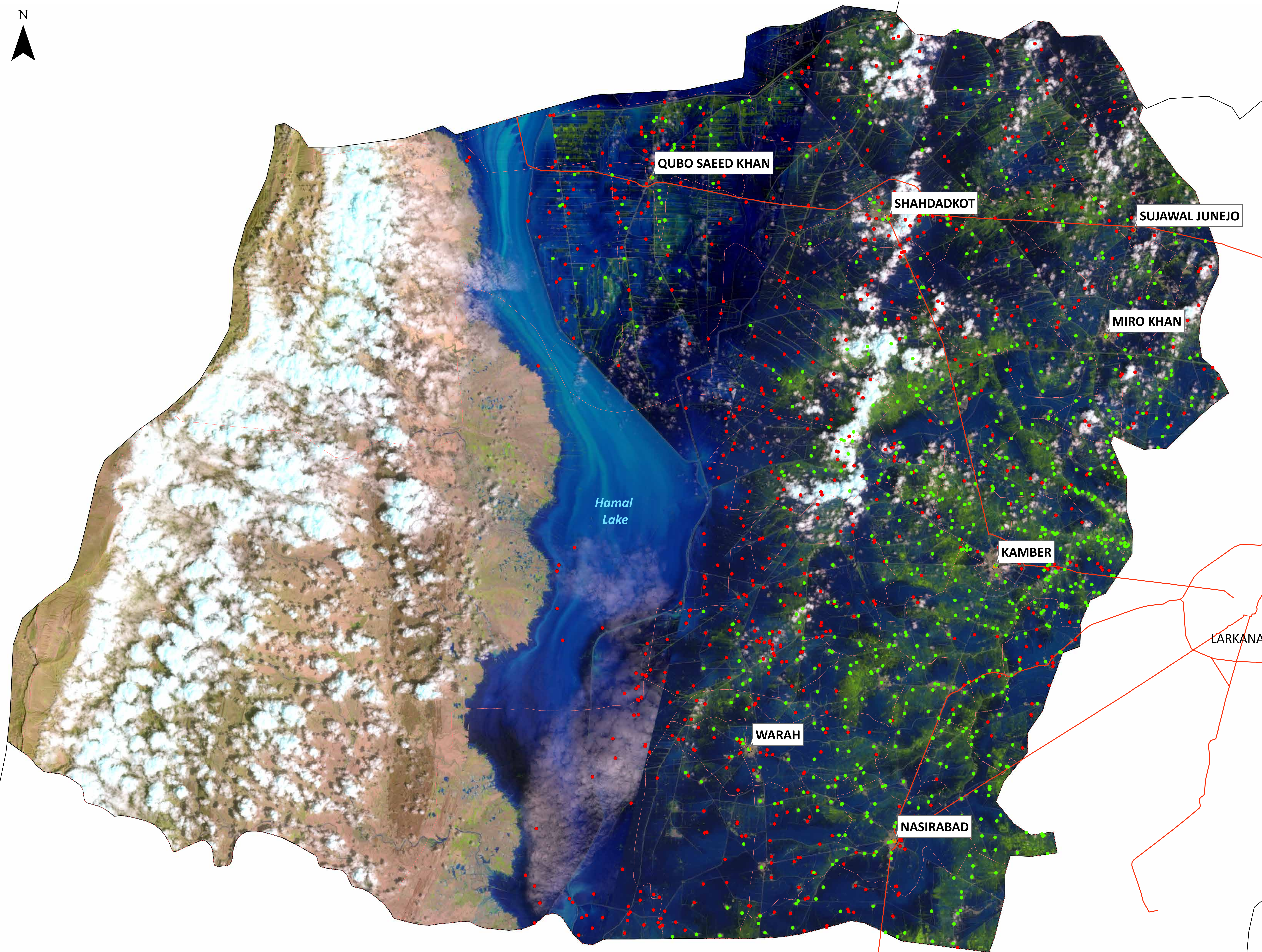
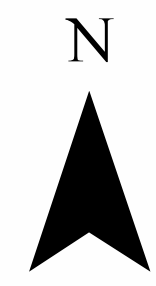


# Flood Inundation in Kamber- Shahdadkot District

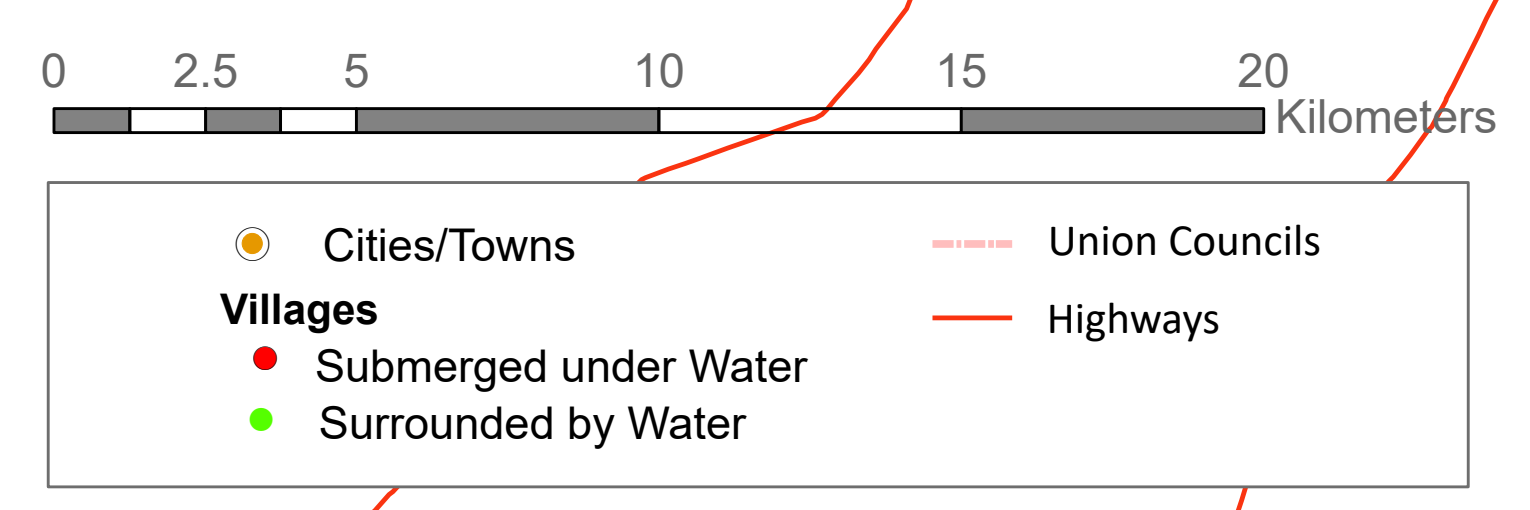


District Profile		
District Area	5596.44 Sq.Km	62.39%
Area Inundated	3491.86 Sq.Km	
Crop Land	778049.93 Acres	87.95%
Crop Land Inundated	684329.06 Acres	
Rainfall (Jul-Aug)	789 mm	
Population (as per 2017 Census)	1,334,552	
Affected Union Councils	34 Out of 34	

UC-wise Affected Villages		
Name	Submerged in Water (No.)	Surrounded By Water (No.)
ABAD	25	23
AITBAR KHAN CHANDIO	52	30
BAGODERO	25	9
BAHRAM	14	31
BER	7	40
BUHAR	44	20
CHOUSUL	19	25
DERA	1	33
DHINGANO MAHESAR	17	22
DOST ALI	33	29
GAIBIDERO	37	-
GAJI KHUNAWAR	22	8
HAZAR WAH	42	15
JAMALI	49	21
JIAN ABRO	21	71
KALAR	23	18
KAMBER-3	6	25
KARIRA	31	24
KHABAR	43	10
KHAIRPUR JOSO	21	29
KHANDU	36	15
LAKHU	25	16
LALOO ROUNAK	6	22
MIANDAD CHINJINI	15	26
MIROKHAN	6	16
MIRPUR	37	-
MURADI	16	28
QUBO SAEED KHAN	34	25
RANWATI	13	62
SHAHDADKOT 03	8	3
SIJAWAL	15	25
THARO WADHO	27	28
WAGAN	3	25
WARAH	16	5

**Disclaimer:** 30m resolution satellite image has been used for preliminary damage assessment and depicts status of flood inundation as of image acquisition date. It is pertinent to note that during the course of time, some breaches in FP Bund, Main Nara Valley Drain (MNVD) and irrigation channels were reported which may have further aggravated inundation situation in the district. The situation shall be updated through fresh satellite imagery. Due to the presence of clouds over some parts of the district inundation delineation may be affected. The Union Council boundaries in names used in development of this product were obtained from Board of Revenue, Sindh.

**Source:** Landsat 9 Collection 1, 28<sup>th</sup> August, 2022 05:56 GMT



Preliminary flood damage assessment carried out using Disaster Management Information System (DMIS) @ Provincial Emergency Operation Center (PEOC), PDMA Sindh.